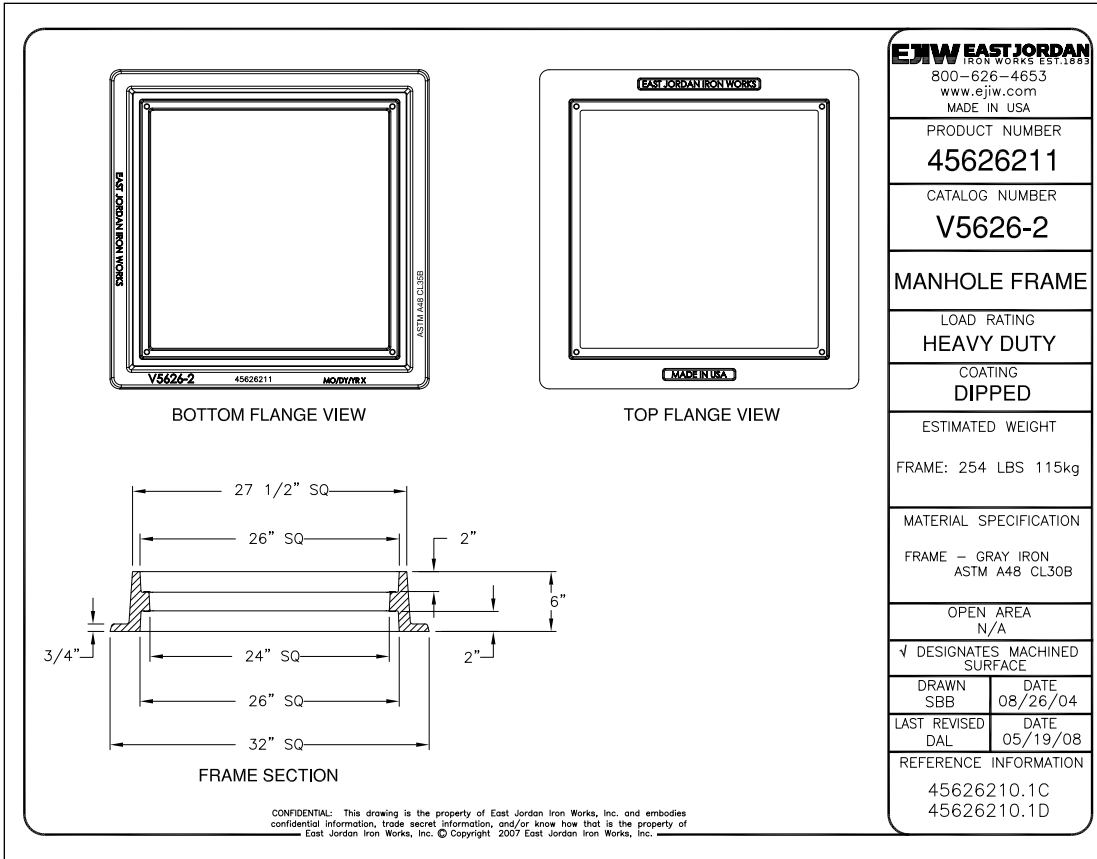


V5626-2 FR REV 6" V5726 GR SET

45726031C03



45626211

Quantity: 1

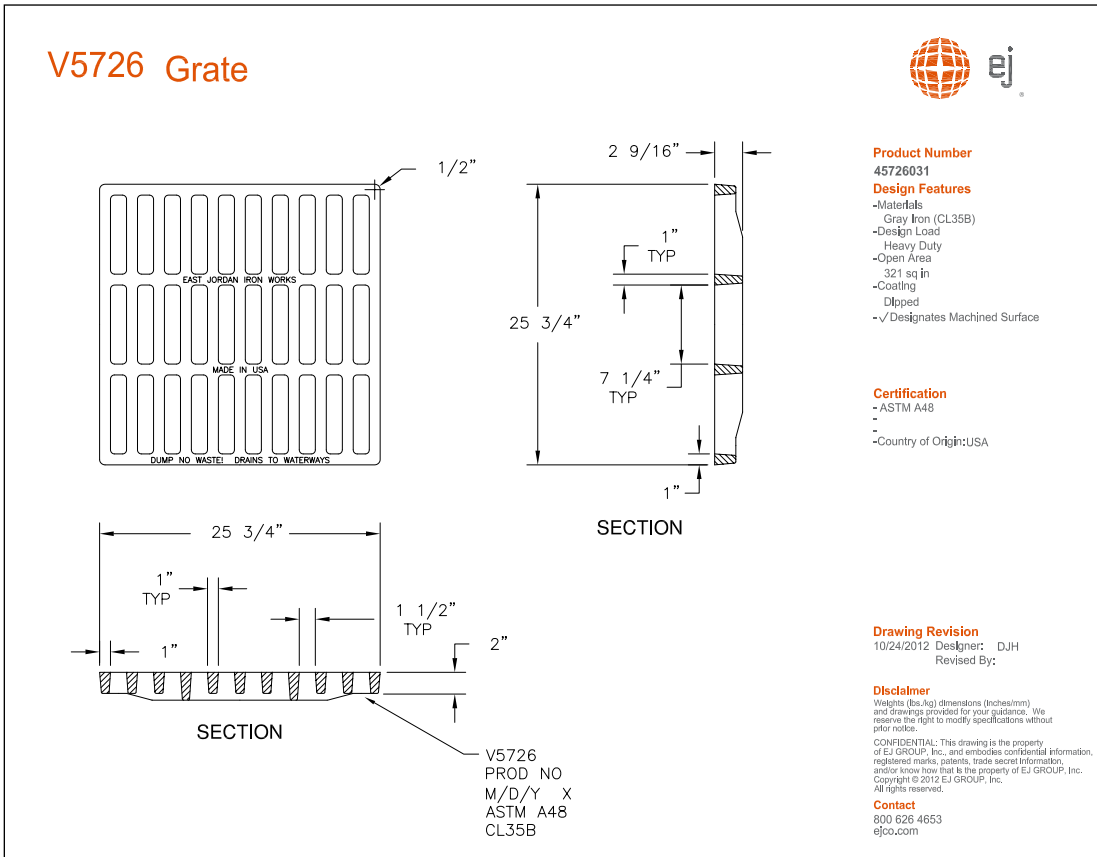
EJ EAST JORDAN IRON WORKS EST. 1953	
800-626-4653 www.ejiw.com MADE IN USA	
PRODUCT NUMBER 45626211	
CATALOG NUMBER V5626-2	
MANHOLE FRAME	
LOAD RATING HEAVY DUTY	
COATING DIPPED	
ESTIMATED WEIGHT FRAME: 254 LBS 115kg	
MATERIAL SPECIFICATION FRAME - GRAY IRON ASTM A48 CL30B	
OPEN AREA N/A	
√ DESIGNATES MACHINED SURFACE	
DRAWN SBB	DATE 08/26/04
LAST REVISED DAL	DATE 05/19/08
REFERENCE INFORMATION 45626210.1C 45626210.1D	

V5726 Grate



45726031

Quantity: 1



Product Number
45726031

Design Features

- Materials
Gray Iron (CL35B)
- Design Load
Heavy Duty
- Open Area
321 sq in
- Coating
Dipped
- √Designates Machined Surface

Certification

- ASTM A48
-
- Country of Origin:USA

Drawing Revision
10/24/2012 Designer: DJH
Revised By:

Disclaimer
Weights (lbs./kg) dimensions (inches/mm) and drawings provided for your guidance. We reserve the right to modify specifications without prior notice.

Contact
800 626 4653
ejco.com

Supplied By:

TRENCH DRAIN SUPPLY
877-903-7246
www.trenchdrainsupply.com

Disclaimer

Weight (lbs./kg), dimensions (inches/mm) and drawings provided for your guidance. We reserve the right to modify specifications without prior notices

CONFIDENTIAL: This drawing is the property of EJ GROUP, Inc., and embodies confidential information, registered marks, patents, trade secret information, and/or know how that is the property of EJ GROUP, Inc. Copyright © 2013 EJ GROUP, Inc. All rights reserved

Contact
800 626 4653
ejco.com